

Tools and accessories

Renewable Energy | Solar Photovoltaics

EN



Content



Page 4

Assembly tools

- Crimping pliers for MC4 and MC4-Evo 2
- Crimping pliers for closed crimp contacts MC4
- Crimping pliers for closed crimp contacts MC4
- Crimping pliers for semi-professional use MC4
- Stripping pliers
- Open-end spanner and unlocking tool
- Cable cutter
- Torque tool set



Page 15

Tool cases and tool belt

- Tool case for MC4 and MC4-Evo 2
- Tool case MC4 for North America
- Tool belt for MC4 and MC4-Evo 2



Page 18

Accessories

- Test socket and plug MC4
- Test plug MC4
- Test plug MC4-Evo 2
- Sealing caps MC4 and MC4-Evo 2
- Safety lock clip
- Socket wrench insert

ASSEMBLY TOOLS

Crimping pliers for MC4 and MC4-Evo 2



Crimping pliers for MC4 and MC4-Evo 2 (PV-CZM...)



Locator (PV-LOC-MC4-EVO 2...)



Locator (PV-LOC-MC4...)

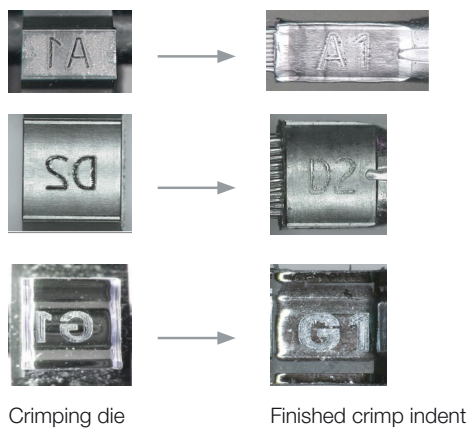


Crimping die (PV-ES-CZM...)

- One set of crimping pliers for crimping on both MC4 and MC4-Evo 2.
- Designed to be used for all (open) B-crimps.
- The crimping tool can process the following conductor cross-sections with one crimping die:
 - Size 1: 2.5 mm², 4 mm² and 6 mm²
 - Size 2: 4 mm², 6 mm² and 10 mm²
 - Size 3: 14 AWG, 12 – 10 AWG, 8 AWG
- TÜV and UL certified product.
- Registered design feature providing traceability information about crimping tool on each individual crimp.

How to verify that each crimp is made using the suitable tool and die?

The registered design of the crimp traceability concept is providing information about the conductor size, crimp height and crimp width. For further information relating this feature please refer to assembly instruction MA704.



Usage matrix

Type	Conductor cross section	Open crimp contacts B-Crimp	Closed crimp contacts* O-Crimp	Crimping pliers			Crimping dies			Locators				
				PV-CZM-60100 32.6020-60100	PV-CZM-61100 32.6020-61100	PV-CZM-63100 32.6020-63100	PV-ES-CZM-60100 32.6021-60100	PV-ES-CZM-61100 32.6021-61100	PV-ES-CZM-63100 32.6021-63100	4 mm ² , 6 mm ² , 10 mm ² PV-LOC-MC4 32.6081	2.5 mm ² , 4 mm ² , 6 mm ² PV-LOC-MC4 32.6082	4 mm ² , 6 mm ² , 10 mm ² PV-LOC-MC4-EVO 2 32.6083	2.5 mm ² , 4 mm ² , 6 mm ² PV-LOC-MC4-EVO 2 32.6084	14 AWG, 12-10 AWG, 8 AWG PV-LOC-MC4 14/12/10/8 32.6085
PV-KBT4/2,5...-UR, PV-KST4/2,5...-UR	2.5 mm ²	✓			✓			✓			✓			
	14 AWG	✓			✓			✓			✓			
PV-KBT4/6...-UR, PV-KST4/6...-UR	4 mm ²	✓		✓	✓		✓	✓			✓	✓		
	12 AWG	✓		✓	✓		✓	✓			✓	✓		
	6 mm ²	✓		✓	✓		✓	✓			✓	✓		
	10 AWG	✓		✓	✓		✓	✓			✓	✓		
PV-KBT4/10..., PV-KST4/10...	10 mm ²	✓		✓			✓				✓			
PV-KST4-EVO 2/2.5...-UR PV-KBT4-EVO 2/2.5...-UR	2.5 mm ²	✓			✓			✓						✓
	14 AWG	✓			✓			✓						✓
PV-KST4-EVO 2/6...-UR PV-KBT4-EVO 2/6...-UR	4 mm ²	✓		✓	✓		✓	✓					✓	✓
	12 AWG	✓		✓	✓		✓	✓					✓	✓
	6 mm ²	✓		✓	✓		✓	✓					✓	✓
	10 AWG	✓		✓	✓		✓	✓					✓	✓
PV-KST4-EVO 2A/6... PV-KBT4-EVO 2A/6...	4 mm ²	✓		✓	✓		✓	✓					✓	✓
	12 AWG	✓		✓	✓		✓	✓					✓	✓
	6 mm ²	✓		✓	✓		✓	✓					✓	✓
	10 AWG	✓		✓	✓		✓	✓					✓	✓
PV-KST4-EVO 2A/10... PV-KBT4-EVO 2A/10...	10 mm ²	✓		✓			✓						✓	
	8 AWG	✓		✓			✓						✓	
PV-KBT4/5...-UR, PV-KST4/5...-UR PV-KBT4/5...UR AU PV-KST4/5...UR AU	14 AWG		✓			✓			✓					✓
	12 AWG		✓			✓			✓					✓
	10 AWG		✓			✓			✓					✓
PV-KBT4/8...-UR, PV-KST4/8...-UR PV-KBT4/8...UR AU PV-KST4/8...UR AU	8 AWG		✓			✓			✓					✓

Ordering information

Order-No.	Type	Designation	Crimp contact type		Crimping range
			B-Crimp	O-Crimp	
32.6020-61100	PV-CZM-61100	Size 1: Crimping pliers incl. locator for MC4 and MC4-Evo 2	x		2.5 mm ² ; 4 mm ² ; 6 mm ²
Consists of:					
32.6082	PV-LOC-MC4 2.5/4/6	Locator for MC4	x		2.5 mm ² ; 4 mm ² ; 6 mm ²
32.6084	PV-LOC-MC4-EVO 2 2.5/4/6	Locator for MC4-Evo 2	x		
32.6021-61100	PV-ES-CZM-61100	Crimping die	x		
32.6020-60100	PV-CZM-60100	Size 2: Crimping pliers incl. locator for MC4 and MC4-Evo 2	x		4 mm ² ; 6 mm ² ; 10 mm ²
Consists of:					
32.6081	PV-LOC-MC4 4/6/10	Locator for MC4	x		4 mm ² ; 6 mm ² ; 10 mm ²
32.6083	PV-LOC-MC4-EVO 2 4/6/10	Locator for MC4-Evo 2	x		
32.6021-60100	PV-ES-CZM-60100	Crimping die	x		
32.6020-63100	PV-CZM-63100	Size 3: Crimping pliers incl. locator for MC4 and MC4-Evo 2		x	14 AWG; 12 – 10 AWG; 8 AWG
Consists of:					
32.6085	PV-LOC-MC4 14/12-10/8	Locator for MC4		x	14 AWG;
32.6021-63100	PV-ES-CZM-63100	Crimping die		x	12 – 10 AWG; 8 AWG
32.6020-64100	PV-CZM-64100	Size 4: Crimping pliers incl. locators for MC4	x	x	
Consists of:					
32.6320	PV-CZM-	Crimping pliers			
32.6082	PV-LOC-MC4 2.5/4/6	Locator for MC4	x		14 AWG; 12 AWG;
32.6021-61100	PV-ES-CZM-61100	Crimping die	x		10 AWG
32.6085	PV-LOC-MC4 14/12-10/8	Locator for MC4		x	14 AWG;
32.6021-63100	PV-ES-CZM-63100	Crimping die		x	12 – 10 AWG; 8 AWG

Further information



Assembly instructions

For assembly instructions for “Crimping pliers for MC4 and MC4-Evo 2” please consult:
www.staubli.com/re-downloads.html → English → Assembly info → **MA704**

Crimping pliers for closed crimp contacts MC4 AWG6



Crimping pliers for closed crimp contacts MC4 (PV-CZLX/6AWG...)

- Manual crimping pliers for MC4 cable couplers with 6 AWG closed crimp terminals (PV-KBT4/13II-UR and PV-KST/13II-UR).
- Locator included for correct positioning of crimp.

Ordering information

Order No.	Type	Designation	Connector system	Crimp range		Crimptype	
				mm ²	AWG	Open crimp AWG	Closed crimp AWG
32.0349	PV-CZLX/6AWG	Crimping pliers, incl. locator	MC4		6		6

Individual parts

32.0350	PV-CZL/6AWG-LOC	Locator	MC4		6		6
---------	-----------------	---------	-----	--	---	--	---

Further information



Assembly instructions

For assembly instructions for “Crimping pliers for closed crimp contacts MC4 (PV-CZLX/6AWG)” please consult: www.staubli.com/re-downloads.html → English → Assembly info → **MA710**

Crimping pliers for semi-professional use MC4, IEC only



- Application: For occasional field assembly of IEC certified Stäubli connectors.
- Not UL certified.

Crimping pliers for semi-professional use MC4 (PV-CZM-BS)

Ordering information

Order No.	Type	Designation	Pliers cross sections	Connector system
			mm ²	
32.6025	PV-CZM-BS	Crimping pliers	2.5; 4; 6	MC4

Spalte gelöscht

Further information



Assembly instructions

For assembly instructions for “Crimping pliers for semi-professional use MC4” please consult:
www.staubli.com/re-downloads.html → English → Assembly info → **MA289**

Stripping pliers



- Suitable for all PV leads; in particular Flex-Sol-Evo leads.
- For stripping small amounts of lead.
- With length stop.

Stripping pliers (PV-AZM...)

Ordering information

Order No.	Type	Designation	Pliers cross sections	
			mm ²	AWG
32.6027-156	PV-AZM-156	Stripping pliers incl. built-in stripping blades	1.5; 2.5; 4; 6	
32.6027-410	PV-AZM-410	Stripping pliers incl. built-in stripping blades	4; 6; 10	
32.6027-128	PV-AZM-128	Stripping pliers incl. built-in stripping blades		12; 10; 8
32.6027-106	PV-AZM-106	Stripping pliers incl. built-in stripping blades		10; 8; 6
32.6057-156	PV-M-AZM-156	Stripping blades set	1.5; 2.5; 4; 6	
32.6057-410	PV-M-AZM-410	Stripping blades set	4; 6; 10	
32.6057-128	PV-M-AZM-128	Stripping blades set		12; 10; 8
32.6057-106	PV-M-AZM-106	Stripping blades set		10; 8; 6

Further information



Assembly instructions

For assembly instructions for “Stripping pliers” please consult:

www.staubli.com/re-downloads.html → English → Assembly info → **MA267**

Open-end spanner sets and unlocking tool



Open-end spanner set for MC4 (PV-MS)



Unlocking tool for MC4-Evo 2
(PV-MS-MC4-EVO 2)

- For pre-tightening and loosening the cap nut.
- For MC4 and MC4-Evo 2, also for releasing the locking of the plug-in connection.



Open-end spanner set for MC4 and MC4-Evo 2 (PV-MS-PLS)



Open-end spanner set for MC4-Evo ready
(PV-MS-MC4-EVO READY)

Ordering information

Order No.	Type	Designation	Material
32.6024	PV-MS	Open-end spanner set for MC4 (2 pcs.)	Plastic
32.6058	PV-MS-PLS	Open-end spanner set for MC4 and MC4-Evo 2 (2 pcs.)	Metal
32.6066	PV-MS-MC4-EVO 2	Unlocking tool for MC4-Evo 2	Plastic
32.6070	PV-MS-MC4-EVO READY	Open-end spanner set for MC4-Evo ready (2 pcs.)	Plastic

Further information



Assembly instructions

For assembly instructions for “Open-end spanner set for MC4 and MC4-Evo 2” please consult:
www.staubli.com/re-downloads.html → English → Assembly info → **MA270**

Cable cutter



Cable cutter (PV-WZ-KS)

- Cable cutter with a special cutting blade geometry for an easy, clean cut.
- Ergonomic one-handed operation as it is fitted with an opening spring
- No crushing or deformation of wire.
- To cut single stranded, multiple stranded, and finely stranded copper and aluminum conductors.

Ordering information

Order No.	Type	Designation	Max. wire diameter
32.6080	PV-WZ-KS	Cable cutter	15 mm

Note

Not to be used on steel wire, wire rope, and hard-drawn copper cable.

Further information



Assembly instructions

For assembly instructions for “Cable cutter” please consult:
www.staubli.com/re-downloads.html → English → Assembly info → **MA705**

Torque tool set



Torque tool set (PV-WZ-TORQUE-SET)

- Adjustable torque tool set with optimized design.
Easy insertion and removal of the lead to be assembled.
- Ergonomic handle
- One-handed operation
- For manual final assembly of the cap nut with the correct torque for original MC4 and MC4-Evo 2 connectors
- Comes with a multi-component special pistol grip which provides a safe and comfortable fit in the hand and high-power transfer.

Technical data

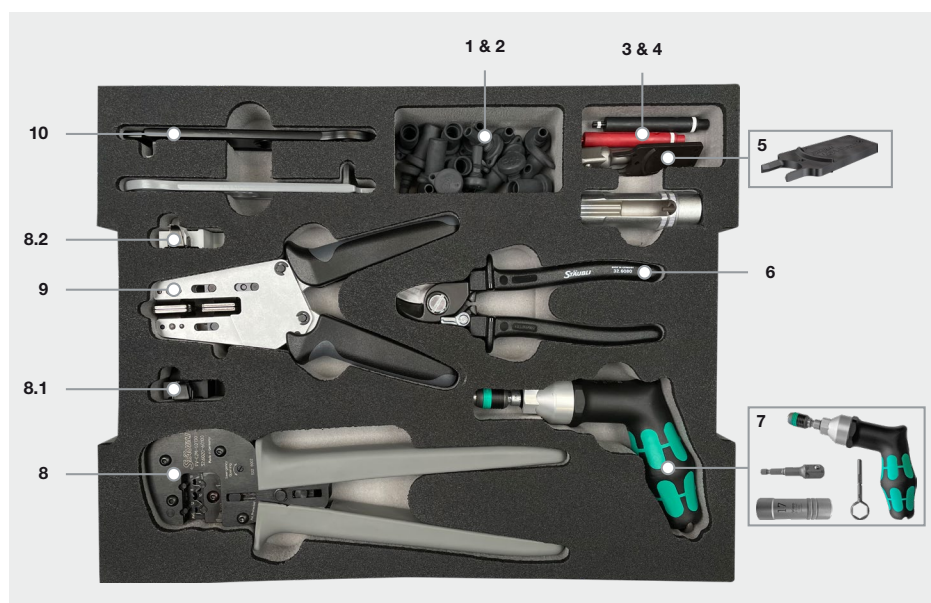
Technical data	
Range	3.0 N m – 6.0 N m
Accuracy	±6 % (EN ISO 6789)
Display of the set torque	Numerical scale

Ordering information

Order No.	Type	Designation
32.0065	PV-WZ-TORQUE-SET	Torque tool set: consisting of torque tool (incl. extra tool integrated in handle to set torque), adapter and socket wrench insert

TOOL CASES AND TOOL BELT

Tool case for MC4 and MC4-Evo 2



- Robust plastic case with tools for the assembly of MC4 and MC4-Evo 2.
- Equipped for metric cable sizes (mm²).
- Equipped for open crimp contacts (4 mm², 6 mm², 10 mm²).

Tool case for MC4 and MC4-Evo 2

Ordering information

Pos.	Order No.	Type	Description	Dimensions (length x width x height)
	32.6126	PV-Installer Tool Case SET	Tool case for MC4 and MC4-Evo 2	444 mm x 350 mm x 118 mm

Consisting of:

1	32.0716	PV-BVK4	Sealing caps socket (10 pcs.)	
2	32.0717	PV-SVK4	Sealing caps plug (10 pcs.)	
3	32.6028	PV-PST	Test plug MC4	
4	32.6073	PV-EVO-PST	Test plug MC4-Evo 2	
5	32.6066	PV-MS-MC4-EVO 2	Unlocking tool	
6	32.6080	PV-WZ-KS	Cable cutter	
7	32.0065	PV-WZ-TORQUE-SET	Torque tool	
8	32.6020-60100	PV-CZM-60100	Crimping pliers for MC4, MC4-Evo 2	
8.1	32.6081	PV-LOC-MC4	Locator for MC4	
8.2	32.6083	PV-LOC-MC4-Evo 2	Locator for MC4-Evo 2	
9	32.6027-410	PV-AZM-410	Stripping pliers	
10	32.6058	PV-MS-PLS	Assembly and unlocking tool	

MC4 tool case for use in UL markets



MC4 tool case for use in UL markets

- Robust plastic case with tools for assembly of MC4 connectors.
- Configured for American Wire Gauge (AWG) cable sizes (14 AWG to 8 AWG).
- Available fully populated with basic content and crimp tool kit PV-CZM-64100. The kit includes crimping plier PV-CZM with crimp insert PV-ES-CZM-63100 and locator PV-LOC-MC4 14/12-10/8 preinstalled for crimping of closed crimp contacts. It also includes crimp insert PV-ES-CZM-61100 and locator PV-LOC-MC4 2.5/4/6 for crimping of open crimp contacts.
- Also available only with basic content (no crimping pliers).

Ordering information

Pos.	Order No.	Type	Designation	Dimension (length × width × height)
	32.6128-64100	PV-WZ/AWG-SET-64100	includes basic content and tool kit PV-CZM-64100 (open contacts 14/12/10 AWG, closed contacts 14/12/10/8 AWG)	MA704
	32.6128-00000	PV-WZ/AWG-SET	includes basic content (crimping pliers not included)	

Basic content

1	32.6058	PV-MS-PLS	Assembly and unlocking tool	
2	32.0065	PV-WZ-Torque-Set	Torque tool	
3	32.6027-128	PV-AZM-128	Stripping pliers (cable sizes 12/10/8 AWG)	
4	32.6080	PV-WZ-KS	Cable cutter	
5	32.6028	PV-PST	Test plug	
6	32.0716	PV-BVK4	Sealing cap for female cable couplers (10 pcs.)	
7	32.0717	PV-SVK4	Sealing cap for male cable couplers (10 pcs.)	

Tool belt for MC4 and MC4-Evo 2



Tool pouch



Material pouch



Tool belt for MC4 and MC4-Evo 2

- The correct tool is always at hand in the tool belt for MC4 and MC4-Evo 2.
- The tool belt for MC4 and MC4-Evo 2 consists of:
 - a tool bag with leather holders, integrated elastic compartments, and D-ring to keep all tools needed for on-site assembly.
 - a material bag with zipper for safe storage of connectors and other small parts. The material bag can be kept open thanks to a snap fastener.
 - a belt with quick fastener.
- Long-lasting thanks to heavy-duty, weatherproof material.
- Easy to put the tool belt on and take it off thanks to an adjustable snap fastener.
- Stable seating, the tool belt will not twist.

Note:

The tool belt for MC4 und MC4-Evo 2 is delivered without the tools and materials shown here.

Ordering information

Order No.	Type	Designation	Dimensions (length x width x height)
32.0387	Installer Tool Belt SET	Tool belt for MC4 and MC4-Evo 2	

Consists of:

	Tool pouch	26 cm x 14.5 cm x 27 cm
	Material pouch	17.5 cm x 10.5 cm x 18.5 cm
	Belt with quick fastener	155 cm x 5.5 cm

Test plug MC4



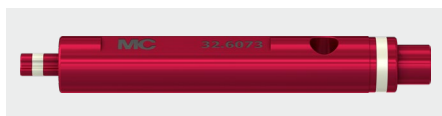
Test plug MC4 (PV-PST)

- This test plug is used to verify the correct location of the MC4 contact in the insulation.

Ordering information

Order No.	Type
32.6028	PV-PST

Test plug MC4-Evo 2



Test plug MC4-Evo 2 (PV-EVO-PST)

- This test plug is used to verify the correct location of the MC4-Evo 2 metal contact in the insulation.

Ordering information

Order No.	Type
32.6073	PV-EVO-PST

Sealing caps MC4 and MC4-Evo 2



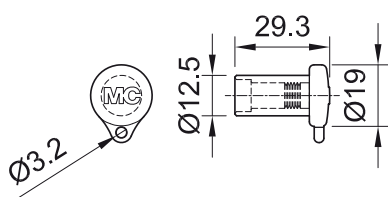
Sealing cap for female cable couplers (PV-BVK4)



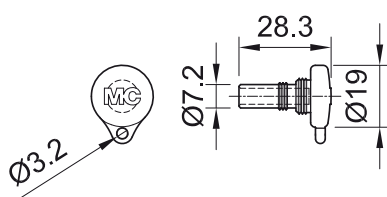
Sealing cap for male cable couplers (PV-SVK4)

- Sealing caps for protective purpose of unplugged PV connectors.

Dimensional drawings, in mm



Sealing cap for female cable couplers (PV-BVK4)



Sealing cap for male cable couplers (PV-SVK4)

Ordering information

Order No.	Type	Suitable for socket side	Suitable for plug side	Material	Connector system
32.0716	PV-BVK4	x		TPE	MC4/MC4-Evo 2
32.0717	PV-SVK4		x	TPE	MC4/MC4-Evo 2

Further information



Assembly instructions

For assembly instructions for “Sealing caps MC4 and MC4-Evo 2” please consult:
www.staubli.com/re-downloads.html → English → Assembly info → **MA258**

Safety lock clip



Safety lock clip (PV-SSH4)

- The pluggable safety lock clip secures the PV plug connection. The plug connection can only be unlocked with the open-end spanner set (PV-MS or PV-MS-PLS).
- The safety lock clip is suitable for MC4 connector systems.

Ordering information

Order No.	Type	Designation	Connector system
32.5280	PV-SSH4	Safety lock clip	MC4

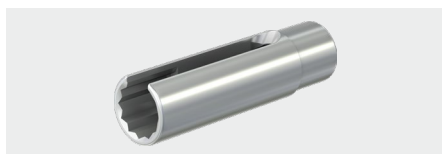
Further information



Assembly instructions

For assembly instructions for “Safety lock clip” please consult:
www.staubli.com/re-downloads.html → English → Assembly info → **MA252**

Socket wrench insert



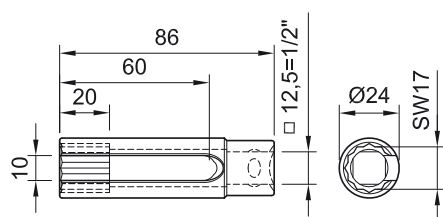
Socket wrench insert to tighten (PV-WZ-AD/GWD)



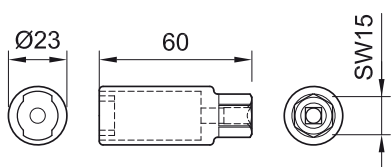
Socket wrench insert to secure (PV-SSE-AD4)

- Stäubli recommends these socket wrench inserts for a simple and safe assembly of the panel receptacles.

Dimensional drawings in mm



Socket wrench insert to tighten (PV-WZ-AD/GWD)



Socket wrench insert to secure (PV-SSE-AD4)

Ordering information

Order No.	Type	Designation
32.6006	PV-WZ-AD/GWD	Socket wrench insert to tighten
32.6026	PV-SSE-AD4	Socket wrench insert to secure



● Stäubli Units ○ Representatives/Agents

Global presence of the Stäubli Group

www.staubli.com